

AQHA

AMERICAN QUARTER
HORSE ASSOCIATION



Leveling Made Easy

A simple guide to find your or your horse's
level.

2022 Class Point Ranges for Determining Horse or Exhibitor Level

Horse may show up in other levels*

OPEN CLASSES (Levelled by Horse)	ROOKIE ¹	LEVEL 1	LEVEL 2	LEVEL 3
Barrel Racing - All Ages	0-49.5	0-24.5	0-33	0-999
Barrel Racing - Junior	-0.25	0-999	0-35	0-999
Barrel Racing - Senior	0-999	0-35	0-999	0-999
Hunter Hack - All Ages	0-999	0-24.5	0-25	0-999
Hunter Hack - Junior	0-999	0-33	0-999	0-999
Hunter Hack - Senior	0-999	0-25	0-25	0-999
Hunter Under Saddle - All Ages	0-49.5	0-24.5	0-31	0-999
Hunter Under Saddle - Junior	0-24.5	0-26	0-26	0-999
Hunter Under Saddle - Senior	0-999	0-30	0-999	0-999
Jumping - All Ages	0-999	0-24.5	NL	0-999
Pressure Driving - All Ages	NL	NL	NL	0-999
Pressure Driving - Junior	NL	NL	NL	0-999
Pressure Driving - Senior	NL	NL	NL	0-999
Pole Bending - All Ages	0-49.5	0-24.5	0-25	0-999
Pole Bending - Junior	0-25	0-25	0-25	0-999
Pole Bending - Senior	0-49.5	0-27	0-27	0-999
Ranch Riding - All Ages	0-49.5	0-24.5	0-44	0-999
Ranch Riding - Junior	0-29	0-29	0-29	0-999
Ranch Riding - Senior	0-999	0-45	0-45	0-999
Riding - All Ages	0-49.5	0-24.5	0-25	0-999
Riding - Junior	0-34	0-34	0-34	0-999
Riding - Senior	0-999	0-37	0-999	0-999
Trail - All Ages	0-49.5	0-24.5	0-125	0-999
Trail - Junior	0-96	0-96	0-113	0-999
Trail - Senior	0-999	0-96	0-999	0-999
Western Pleasure - All Ages	0-49.5	0-24.5	0-36	0-999
Western Pleasure - Junior	0-34	0-34	0-34	0-999
Western Pleasure - Senior	0-999	0-31	0-999	0-999
Western Riding - All Ages	0-49.5	0-24.5	0-93	0-999
Western Riding - Junior	0-33	0-33	0-33	0-999
Western Riding - Senior	0-999	0-99	0-99	0-999
Working Hunter - All Ages	0-999	0-24.5	0-38	0-999
Working Hunter - Junior	0-999	0-35	0-35	0-999
Working Hunter - Senior	0-999	0-39	0-39	0-999

*In open, amateur and youth classes horse/exhibitor may show up in other levels
 ** Denotes second pass leveling calculation; class was not leveled by first pass calculation
 *** Denotes third pass leveling calculation; class was not leveled by first or second pass calculation
 **** Level 3 has no point minimum or maximum. Any horse and/or exhibitor is eligible to show in Level 3
 NL denotes the class is not leveled

¹ Rookie eligible for horses is a minimum of 50 points by class - all divisions combined with one exception of four fence classes for which there is no limit of points (Hunter Hack, Working Hunter, Equitation Over Fences and Jumping)
 *Rookie eligible for exhibitors is fewer than 10 points by class - all divisions combined
 *Rookie eligible for horses is fewer than 50 points by class - all divisions combined
 *There is no limit for Rookie horse eligibility in our fence classes.
 All ranges are figured from the collection number of points earned by class from November 1, 2016 - October 31, 2018
 2020 show dates is excluded due to COVID-19 impact on scheduled shows.

Horse/exhibitor may show up in other levels*

AMATEUR CLASSES (Levelled by Exhibitor)	ROOKIE ¹	LEVEL 1	LEVEL 2	LEVEL 3
Barrel Racing - Amateur	0-9.5	0-24.5	0-33	0-999
Barrel Racing - Select Amateur	0-9.5	0-24.5	0-35	0-999
Breastway Roping - Amateur	0-9.5	0-24.5	0-28	0-999
Breastway Roping - Select Amateur	0-9.5	0-24.5	0-31	0-999
Cutting - Amateur	0-9.5	0-24.5	0-29	0-999
Cutting - Select Amateur	0-9.5	0-24.5	0-32	0-999
Equitation Over Fences - Amateur	0-9.5	0-24.5	0-29	0-999
Equitation Over Fences - Select Amateur	0-9.5	0-24.5	0-31	0-999
Halter/Performance Halter - Amateur/Select Amateur	0-9.5	0-24.5	0-84	0-999
Heading - Amateur	0-9.5	0-49.5	0-70	0-999
Heading - Select Amateur	0-9.5	0-51.5	0-71	0-999
Heeling - Amateur	0-9.5	0-99	0-99	0-999
Heeling - Select Amateur	0-9.5	0-99	0-99	0-999
Hunt Seat Equitation - Amateur	0-9.5	0-24.5	0-42	0-999
Hunt Seat Equitation - Select Amateur	0-9.5	0-24.5	0-29	0-999
Hunter Hack - Amateur	0-9.5	0-24.5	0-31	0-999
Hunter Hack - Select Amateur	0-9.5	0-26.5	0-36	0-999
Hunter Under Saddle - Amateur	0-9.5	0-26.5	0-42	0-999
Hunter Under Saddle - Select Amateur	0-9.5	0-24.5	NL	0-999
Jumping - Amateur	NL	NL	NL	0-999
Jumping - Select Amateur	NL	NL	NL	0-999
Pressure Driving - Amateur	NL	NL	NL	0-999
Pressure Driving - Select Amateur	0-9.5	0-28.5	0-37	0-999
Pole Bending - Amateur	0-9.5	0-24.5	0-47	0-999
Pole Bending - Select Amateur	0-9.5	0-24.5	0-51	0-999
Ranch Riding - Amateur	0-9.5	0-24.5	0-80	0-999
Ranch Riding - Select Amateur	0-9.5	0-24.5	0-47	0-999
Ranch Sorting - Amateur	0-9.5	0-37.5	0-41	0-999
Ranch Sorting - Select Amateur	0-9.5	0-24.5	0-27	0-999
Riding - Amateur	0-9.5	0-24.5	0-26	0-999
Riding - Select Amateur	0-9.5	0-46.5	0-72	0-999
Showmanship - Amateur	0-9.5	0-24.5	0-40	0-999
Showmanship - Select Amateur	0-9.5	0-24.5	0-47	0-999
Stable Race - Amateur	0-9.5	0-35.5	0-39	0-999
Stable Race - Select Amateur	0-9.5	0-35.5	0-36	0-999
Team Penning - Amateur	0-9.5	0-28.5	0-36	0-999
Team Penning - Select Amateur	0-9.5	0-28.5	0-36	0-999
The Down Roping - Amateur	0-9.5	0-24.5	0-36	0-999
The Down Roping - Select Amateur	0-9.5	0-24.5	0-36	0-999
Trail - Amateur	0-9.5	0-24.5	0-91	0-999
Trail - Select Amateur	0-9.5	0-24.5	0-77	0-999
Western Horsemanship - Amateur	0-9.5	0-37.5	0-69	0-999
Western Horsemanship - Select Amateur	0-9.5	0-30.5	0-46	0-999
Western Pleasure - Amateur	0-9.5	0-26.5	0-39	0-999
Western Pleasure - Select Amateur	0-9.5	0-26.5	0-40	0-999
Western Riding - Amateur	0-9.5	0-24.5	0-25	0-999
Western Riding - Select Amateur	0-9.5	0-24.5	0-28	0-999
Working Cow Horse - Amateur	0-9.5	0-24.5	NL	NL
Working Cow Horse - Select Amateur	0-9.5	0-24.5	0-37	0-999
Working Hunter - Amateur	0-9.5	0-24.5	0-41	0-999
Working Hunter - Select Amateur	0-9.5	0-24.5	0-41	0-999

Amateur Level 1 grouping is based on the higher point range of the age groups

Horse/exhibitor may show up in other levels*

YOUTH CLASSES (Levelled by Exhibitor)	ROOKIE ¹	LEVEL 1	LEVEL 2	LEVEL 3
Barrel - 13 & Under	0-9.5	0-24.5	0-26	0-999
Barrel - 14-18	0-9.5	0-24.5	0-44	0-999
Barrel - 18 & Under	0-9.5	0-24.5	0-25	0-999
Breastway Roping - All Ages	0-9.5	0-24.5	0-25	0-999
Cutting - All Ages	0-9.5	0-24.5	0-25	0-999
Equitation Over Fences - 13 & Under	0-9.5	0-24.5	0-38	0-999
Equitation Over Fences - 14-18	0-9.5	0-24.5	0-36	0-999
Equitation Over Fences - 18 & Under	0-9.5	0-24.5	0-65	0-999
Halter / Performance Halter - All Ages	0-9.5	0-24.5	0-25	0-999
Heading - All Ages	0-9.5	0-24.5	0-25	0-999
Heeling - All Ages	0-9.5	0-24.5	0-35	0-999
Hunt Seat Equitation - 13 & Under	0-9.5	0-24.5	0-60	0-999
Hunt Seat Equitation - 14-18	0-9.5	0-24.5	0-58	0-999
Hunt Seat Equitation - 18 & Under	0-9.5	0-24.5	0-25	0-999
Hunter Hack - 13 & Under	0-9.5	0-24.5	0-37	0-999
Hunter Hack - 14-18	0-9.5	0-24.5	0-40	0-999
Hunter Hack - 18 & Under	0-9.5	0-24.5	0-37	0-999
Hunter Under Saddle - 13 & Under	0-9.5	0-24.5	0-47	0-999
Hunter Under Saddle - 14-18	0-9.5	0-24.5	0-45	0-999
Hunter Under Saddle - 18 & Under	NL	NL	NL	NL
Jumping - All Ages	0-9.5	0-24.5	0-25	0-999
Pole - 14-18	0-9.5	0-24.5	0-34	0-999
Pole - 18 & Under	0-9.5	0-24.5	0-25	0-999
Ranch Riding - 13 & Under	0-9.5	0-24.5	0-26	0-999
Ranch Riding - 14-18	0-9.5	0-24.5	0-26	0-999
Ranch Riding - 18 & Under	0-9.5	0-24.5	0-25	0-999
Ranch Sorting - All Ages	0-9.5	0-39.5	0-38	0-999
Riding - 13 & Under	0-9.5	0-24.5	0-25	0-999
Riding - 14-18	0-9.5	0-24.5	0-26	0-999
Riding - 18 & Under	0-9.5	0-24.5	0-26	0-999
Showmanship - 13 & Under	0-9.5	0-39.5	0-91	0-999
Showmanship - 14-18	0-9.5	0-39.5	0-86	0-999
Showmanship - 18 & Under	0-9.5	0-24.5	0-25	0-999
Stable Race - 13 & Under	0-9.5	0-24.5	0-40	0-999
Stable Race - 14-18	0-9.5	0-24.5	0-37	0-999
Stable Race - 18 & Under	0-9.5	0-24.5	0-25	0-999
Team Penning - All Ages	0-9.5	0-24.5	0-25	0-999
Trail - 13 & Under	0-9.5	0-35.5	0-36	0-999
Trail - 14-18	0-9.5	0-35.5	0-73	0-999
Trail - 18 & Under	0-9.5	0-32.5	0-72	0-999
Western Horsemanship - 13 & Under	0-9.5	0-32.5	0-28	0-999
Western Horsemanship - 14-18	0-9.5	0-32.5	0-87	0-999
Western Horsemanship - 18 & Under	0-9.5	0-24.5	0-84	0-999
Western Pleasure - 13 & Under	0-9.5	0-24.5	0-36	0-999
Western Pleasure - 14-18	0-9.5	0-24.5	0-38	0-999
Western Pleasure - 18 & Under	0-9.5	0-24.5	0-38	0-999
Western Riding - 13 & Under	0-9.5	0-24.5	0-25	0-999
Western Riding - 14-18	0-9.5	0-24.5	0-33	0-999
Western Riding - 18 & Under	0-9.5	0-24.5	0-25	0-999
Working Cow Horse - All Ages	0-9.5	0-24.5	0-25	0-999
Working Cow Horse - 13 & Under	0-9.5	0-24.5	NL	NL
Working Hunter - 13 & Under	0-9.5	0-27.5	0-32	0-999
Working Hunter - 14-18	0-9.5	0-27.5	0-50	0-999
Working Hunter - 18 & Under	0-9.5	0-27.5	0-48	0-999

Youth Level 1 grouping is based on the higher point range of the age groups

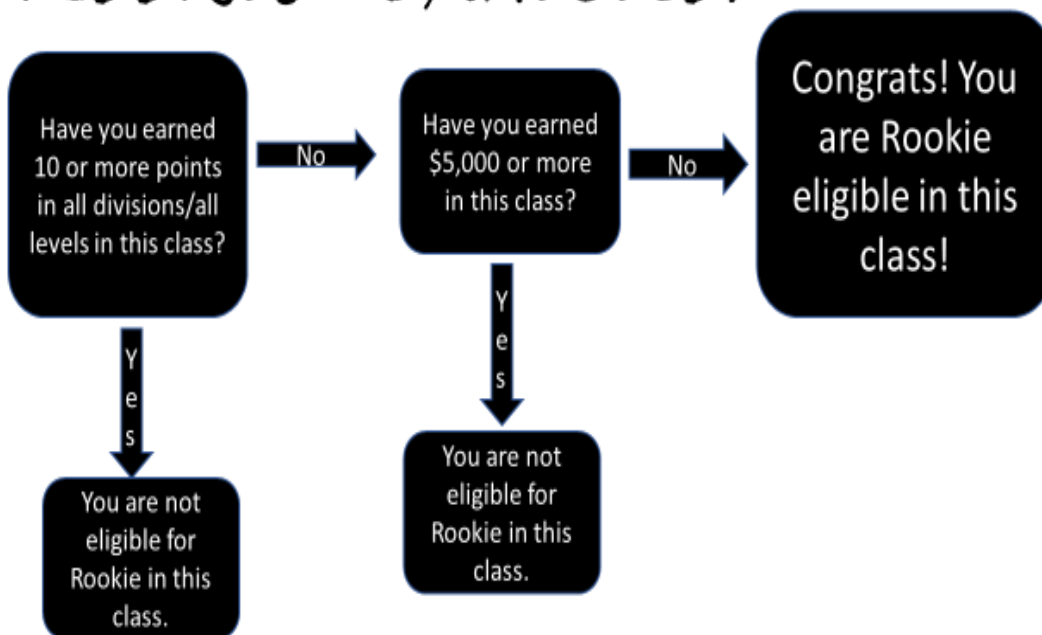
BASIC LEVELING INFORMATION

- ❖ All leveling is on a class by class basis.
- ❖ All Youth and Amateur classes plus Open division Halter and Cattle classes are based on the exhibitor's level eligibility and not the horse.
- ❖ If you show in Youth or Amateur classes, your level eligibility is based solely on your points, awards and money earned.
- ❖ Level 1, 2 and 3 eligibility are based on the previous three years of points--- see Timeline page for example.
- ❖ Points earned in lower level classes will not count against eligibility for higher levels, but points earned in higher levels will count towards lower level eligibility.
 - Example: Points earned in Rookie and Level 1 classes will not be counted towards eligibility for Level 2. Points earned in Level 2 and Level 3 will count towards Rookie and Level 1 eligibility.
- ❖ Lifetime points, awards and money earned does not mean beginning of show career to the date you are checking eligibility.
 - Lifetime for leveling means beginning of show career to October 31 prior to the year of eligibility --- see Timeline page for example.
- ❖ Show management determines whether to level a class.
 - If your class is not leveled, please visit with the show management to request that change.
- ❖ You may show in any level for which you are eligible.
 - Example, if you are Level 1 eligible in a class, you may show in Level 1 plus either Level 2 or Level 3 in the same class.
- ❖ If you wish to qualify for a world show, you must earn points in Level 2 or Level 3.
- ❖ Rookie and Level 1 points do not count towards world show qualifications.
- ❖ Level eligibility is for the full year; whatever levels you are eligible for on January 1st of the current show year is what you are eligible for that whole year.
- ❖ Points earned in Walk/Trot-jog classes do not count towards level eligibility.
- ❖ Ownership requirements are not applied in the Rookie or Level 1 classes; however, ownership requirements are in place for Level 1 at the Top 10 shows. See SHW245.8 of the AQHA rulebook for other ownership requirements.
- ❖ Additional requirement must be met before competing in Performance Halter, Amateur or Youth Boxing or Level 1 (Horse) Working Hunter classes.

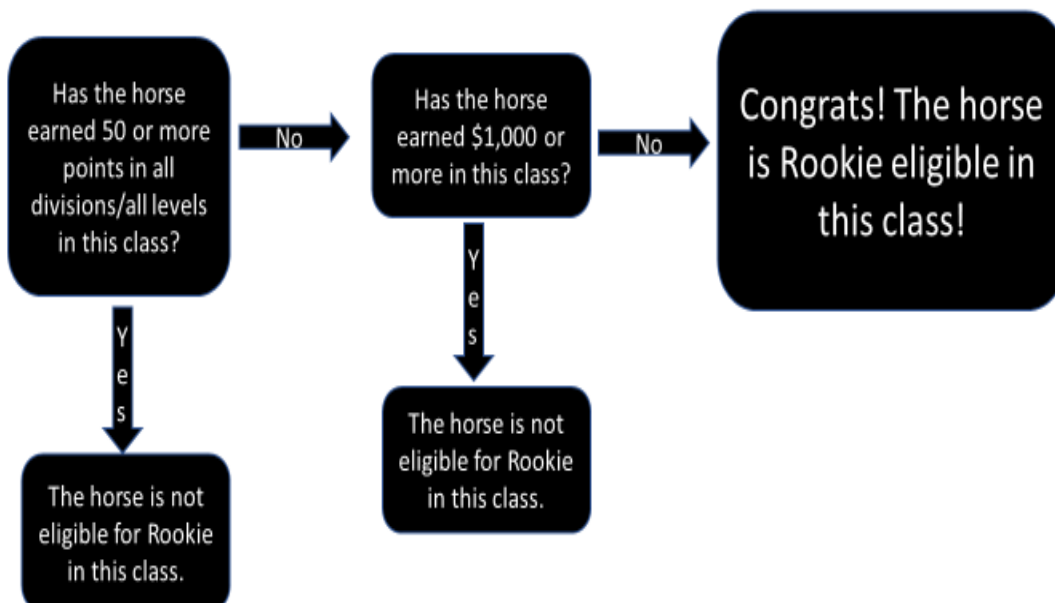
ROOKIE LEVEL

- ❖ To show in a Rookie class, regardless of division, you and the horse you will be showing must both be Rookie eligible in that class.
- ❖ Rookie can be offered for all classes except for Halter/Performance Halter Stallions.
- ❖ Exhibitor Rookie eligibility is based on:
 - Lifetime points, awards and money earned.
 - Must have earned fewer than ten points.
 - All divisions count towards these ten points.
 - Must have never won more than \$5,000.
- ❖ Horse Rookie eligibility is based on:
 - Lifetime points, awards and money earned.
 - Must have earned fewer than 50 points.
 - All divisions and all levels count towards these 50 points.
 - Level 1 (exhibitor) points do not count toward the horse's eligibility.
 - The point and earning limit does not apply to horses shown in over fences classes.
- ❖ Points earned in a Rookie class will only go towards Rookie eligibility.
 - They do not affect eligibility for other levels or count towards any awards or world show qualifications.
- ❖ Once leveled out, you or your horse cannot return to the Rookie level.

Rookie- Exhibitor



Rookie- Horse



• The point and earning limit does not apply to horses shown in over fences classes.

2022 LEVELING TIME FRAMES

3-year time frame is used for Level 1 (exhibitor), Level 2 and Level 3 eligibility. Points earned in this 3- year time frame are added together to get the total number of points.

November 1, 2018  October 31, 2021

5-year time frame is used for Level 2 eligibility when a horse or exhibitor wins a World or Reserve World title.

2017  2021

10- year time frame is used for Superior awards- if a superior was earned during this time frame, the exhibitor is not eligible for Level 1 in the class the Superior was earned.

November 1, 2012  October 31, 2021

10-year time frame is also used for exhibitors who have pointed out of Level 1. If you have received a Level 1 completion achievement, you must not earn any points in that class in any level in any division, for 10 consecutive years in order to become eligible for Level 1 again in that class.

Year achievement received  10 consecutive years with no points earned in that class

Lifetime time frame- this is used for Rookie and Level 1 (horse) eligibility. It starts from the date the first half point was earned in any division and goes through October 31 of the current eligibility year.

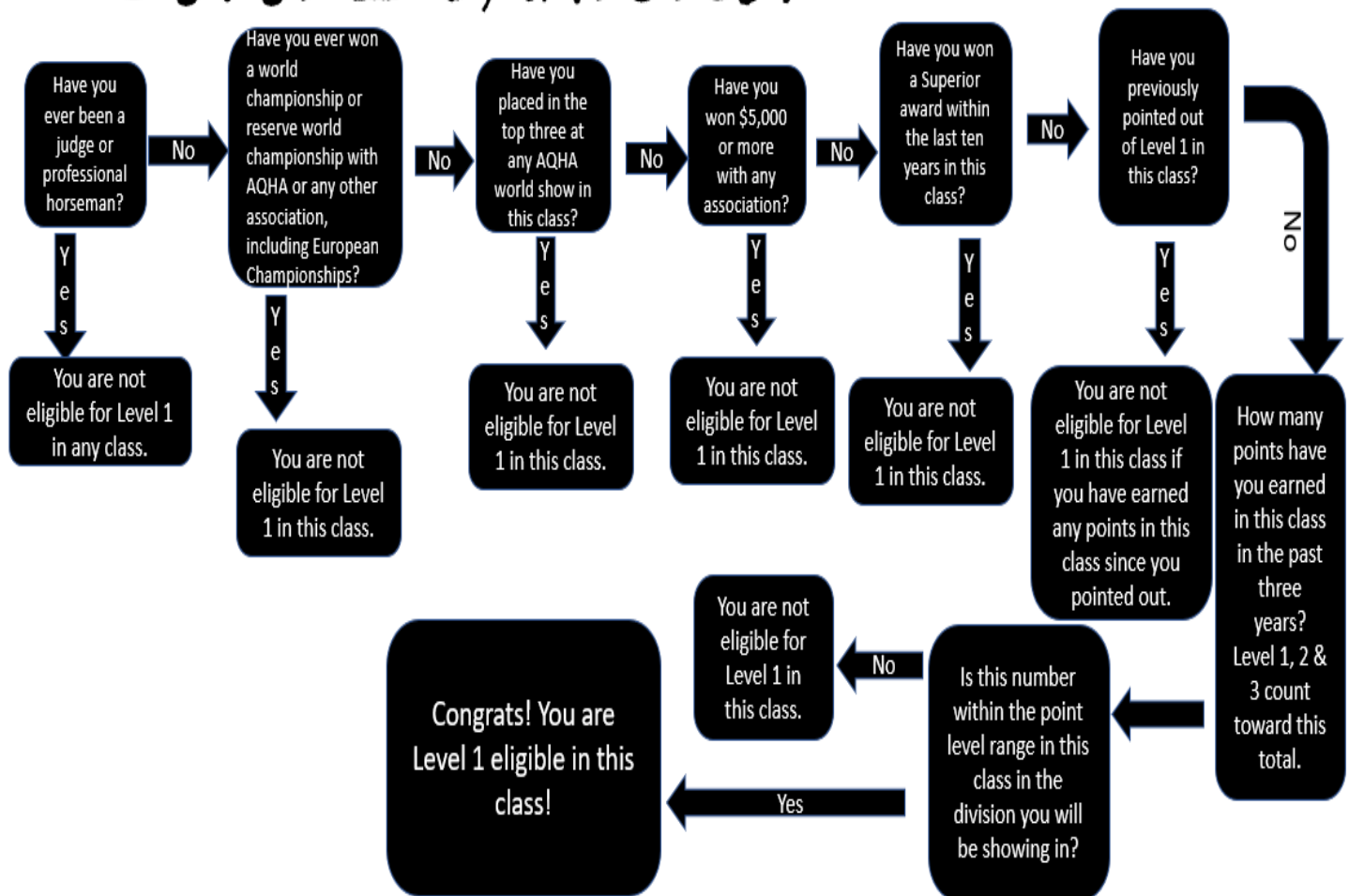
1st half point earned  October 31, 2021

LEVEL 1 EXHIBITOR

- ❖ Level 1 exhibitor eligibility is based on points earned in Level 1, Level 2 and Level 3 classes for the previous three years. (see Timeline page for example).
 - Exclude all Versatility Ranch Horse points
 - Exclude all Dressage points
 - Exclude all Cowboy Mounted Shooting points
 - Exclude all Equestrians with Disability points
 - Exclude all Rookie points
 - Exclude all Walk/Trot-Jog points
- ❖ To be eligible for Level 1 exhibitor classes, you must not have:
 - Earned a superior award within the past ten years (see Timeline page for example) with an equine organization or association with 7,500 members or more.
 - Placed in the top three at any AQHA world show in a particular class.
 - Won a world, reserve world, national or reserve national championship title in a particular class (excluding level 1 class) in any equine organization or association with a membership of more than 7,500 members
 - Won an international or reserve international title for a particular class at the European Championships or German Championships regardless of whether the international class in question was an AQHA–approved class;
 - Won \$5,000 or more in cash and prizes with any equine organization or association.
 - Competed on an NCEA equestrian team on a scholarship or ride as a starting exhibitor in a particular discipline (Western – Horsemanship/Reining and English –Equitation/Equitation over fences).
 - Exhibitors are ineligible to return to Level 1 by discipline until 10 years after final year of competition on a NCEA equestrian team.
 - Ever been a professional horse trainer or an accredited judge- with any breed, any organization or association.
- ❖ A Level 1 application must be submitted each year regardless of the length of the exhibitor’s membership.
- ❖ Level 1 exhibitors may show in Level 1 exhibitor classes on a horse they do not own.
 - The top 10 AQHA shows may require ownership or a show lease in order to participate in Level 1 exhibitor classes.
- ❖ Winning a class at a Level 1 Championship does not make the exhibitor ineligible for Level 1 in that class but does make the exhibitor ineligible to show in that class at any future Level 1 Championships.
- ❖ Exhibitors who have pointed out of Level 1 classes but have not reached any of the other achievements, may be able to return to Level 1 if they do not earn any points (any division/any level) for 10 consecutive years from the year they point out of Level 1 in that class.
 - If an exhibitor is 70 years of age or older by January 1, they may return to Level 1 in a particular class without waiting the 10 consecutive years if they meet the eligibility requirements as listed in SHW245.3.1-SHW245.3.5.

- The 10-year timeframe starts over if the exhibitor earns a ½ point of more in that class during that 10-year period.

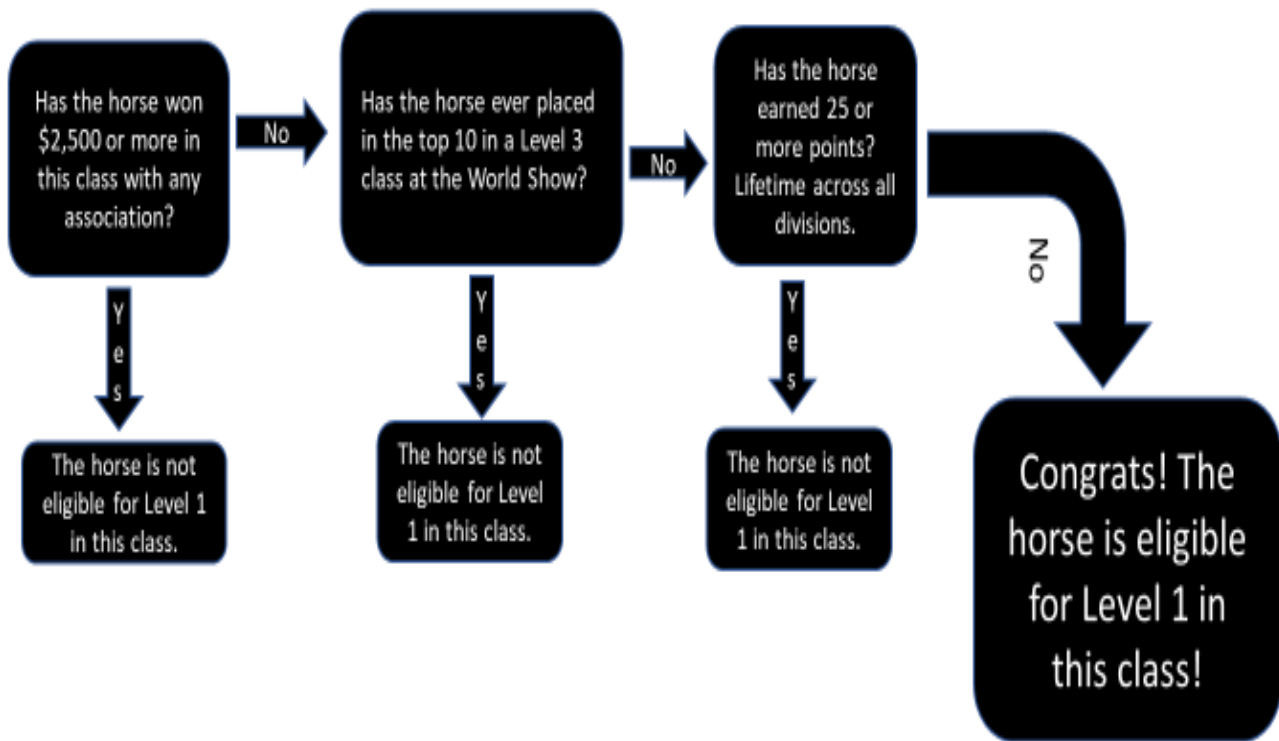
Level 1 Exhibitor



LEVEL 1 HORSE

- ❖ Level 1 (Horse) classes are only available in the Open division.
 - Open Level 1 Halter/Performance Halter and cattle classes are based on the exhibitor
- ❖ Eligibility for Level 1 (Horse) classes is based on lifetime points the horse has earned in all divisions in Level 1, Level 2 and Level 3.
- ❖ Open Level 1 (Horse) eligibility is based on money and lifetime points by class except for:
 - Exclude all Versatility Ranch Horse points
 - Exclude all Dressage points
 - Exclude all Cowboy Mounted Shooting points
 - Exclude all Equestrians with Disability points
 - Exclude all Rookie points
 - Exclude all Walk/Trot-Jog points
- ❖ Horse may not have won \$2,500 or more in any equine organization in a particular class.
- ❖ Horses placing in the top 10 in a particular class at the Open World Show will not be eligible for Open Level 1 in that class beginning the following year (does not include top 10 placings in Level 1 or Level 2 World Show classes) and will no longer be eligible for Level 1 in that class. See SHW251.4
- ❖ Level 1 Working Hunter horses not eligible - SHW630.2.2 exhibited in the following classes with AQHA or any other equine organization: working hunter (other than AQHA Level 1 Working Hunter), equitation over fences or jumping.
- ❖ Level 1 Jumping horses not eligible - SHW655.2.1 won 25 combined points or more in the following AQHA-approved classes: working hunter, equitation over fences or jumping (horse points from all levels in any division will count and are cumulative in determining eligibility) or \$2500 or more in any equine organization in working hunter, equitation over fences or jumping.

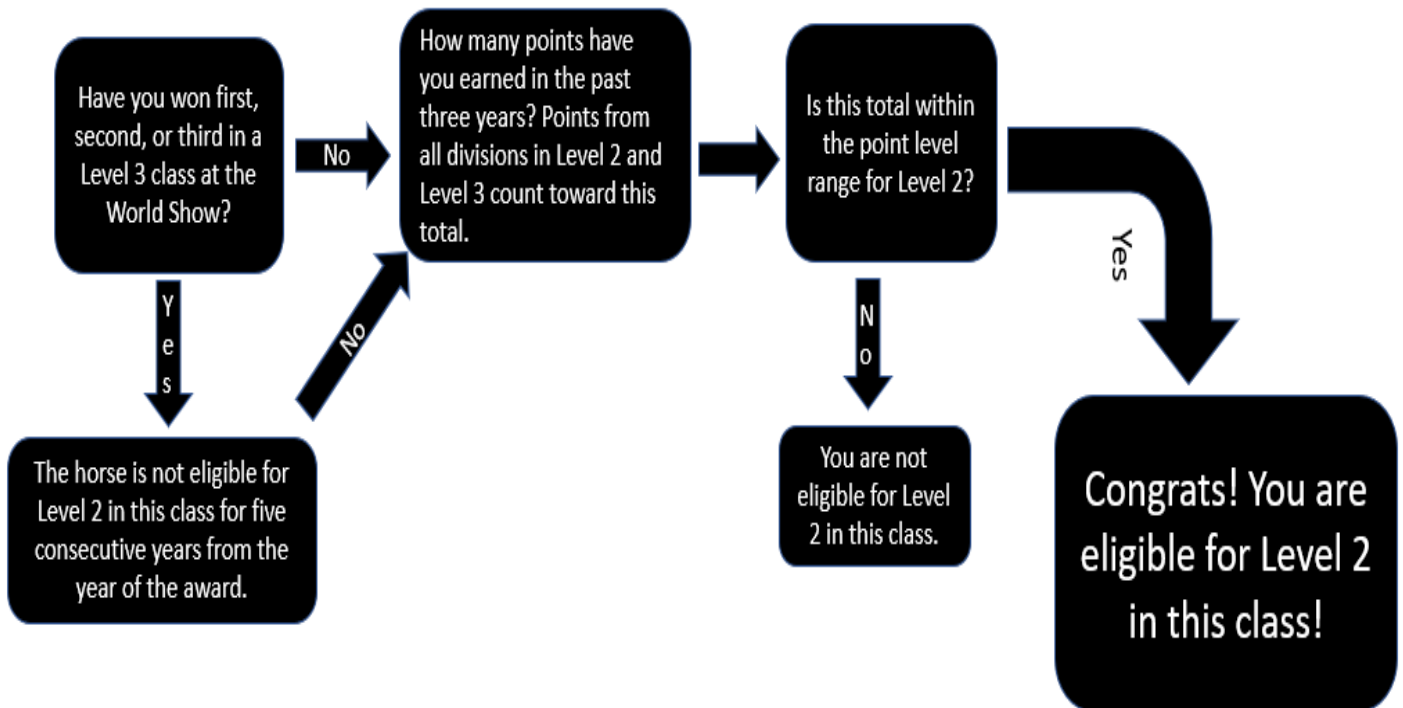
Level 1 Horse



LEVEL 2 EXHIBITOR

- ❖ All amateur, youth and open halter/cattle classes are leveled based on the exhibitor performance.
- ❖ Consider points earned the past three years (see leveling time frame) when comparing those to the point caps for a particular class except for:
 - Exclude all Versatility Ranch Horse points
 - Exclude all Dressage points
 - Exclude all Cowboy Mounted Shooting points
 - Exclude all Equestrians with Disability points
 - Exclude all Rookie points
 - Exclude all Walk/Trot-Jog points
 - Exclude all Level 1 points
- ❖ Exhibitors placing in the top 3 in a particular Level 3 class at any AQHA World Show are not eligible for Level 2 in that class for the subsequent 5 years.
- ❖ Points awarded to Level 2 entries are based on the number of Level 2 entries in the class- not a total of Level 2 and Level 3 entries.

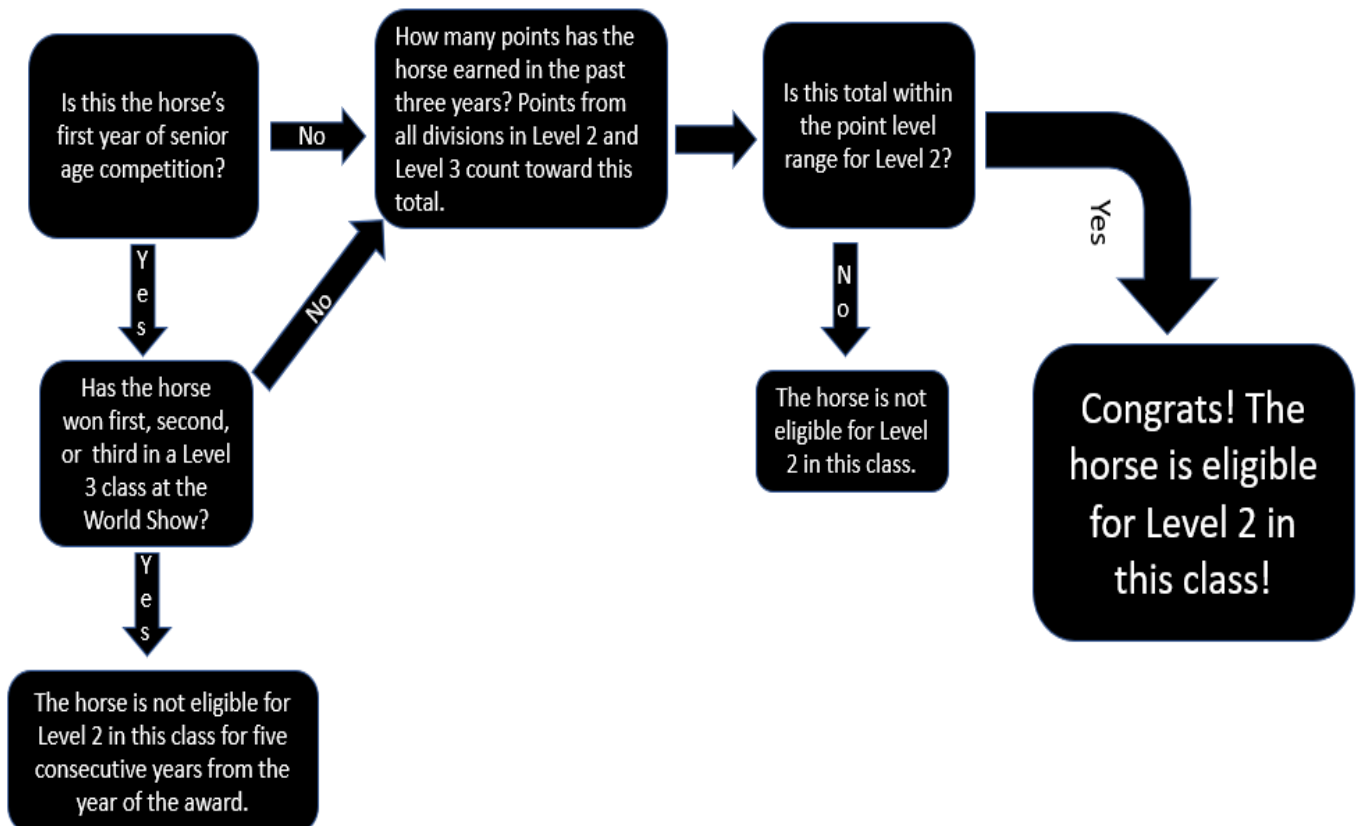
Level 2 Exhibitor



LEVEL 2 HORSE

- ❖ Consider points earned the past three years (see leveling time frame) when comparing those to the point caps for a particular class except for:
 - Exclude all VRH points
 - Exclude all Dressage points
 - Exclude all Cowboy Mounted Shooting points
 - Exclude all Equestrians with Disability points
 - Exclude all Rookie points
 - Exclude all Walk/Trot-Jog points
 - Exclude all Level 1 points
- ❖ Horses in their first year of senior competition (6 years-old and older) are eligible for Level 2 unless:
 - The horse placed in the top 3 in a Level 3 class at the Open World Show which excludes the horse from Level 2 in that particular class for 5 years.
 - Does not include top 3 placings in Level 1 or Level 2 World Show classes.
- ❖ Horses placing in the top 3 in a Level 3 class at the Open World Show are not eligible for Level 2 in that particular class for the subsequent 5 years.
 - Does not include top 3 placings in Level 1 or Level 2 World Show classes.

Level 2 Horse



BENEFITS OF LEVEL 2

- ❖ Level 2 and Level 3 scored and pattern classes must be ran concurrently.
 - Placed classes have the option of being ran concurrently or separately.
- ❖ Regardless if the classes is ran concurrently or separately, the number of points available for Level 2 are based on the number of Level 2 entries.
- ❖ The number of points available for Level 3 are based on the total number of entries in the class (Level 2 and Level 3).
- ❖ Entering Level 2 means all points available are distributed among the Level 2 entries.
 - Even if the class is ran concurrently, you are only competing against the other Level 2 entries.
- ❖ Entering Level 3 means there are more entries equaling more points available.
- ❖ Points earned in Level 2 and Level 3 both count towards Level 3 world show qualifying.
- ❖ Below is an example of how entering Level 2 vs. Level 3 could potentially affect how many points can be earned in the class.

		Level 2 Amateur Trail		Level 3 Amateur Trail	
Total Entries		43		55	
		Placing/Back #	AQHA Points	Placing/Back #	AQHA Points
	1	96	8.0*	300	9.0*
	2	331	7.0	325	8.0
	3	414	6.0	800	7.0
	4	244	5.0	418	6.0
	5	376	4.0	600	5.0
	6	413	3.0	96-L2**	4.0
	7	495	2.0	331-L2	3.0
	8	298	1.0	414-L2	2.0
	9	630	0.5	244-L2	1.0
	10	530		376-L2	0.5
	11	355		413-L2	
	12	263		495-L2	
No. entries in pts.		9		9	
Pts. Awarded		36.5		45.5	
Total Pts. Awarded		82.0			

No. 96 received 8 points because he was entered in Level 2. If No. 96 had entered Level 3, he would have only received 4 points.

Because No. 413 entered Level 2, he earned 3 points. If No. 413 entered Level 3, he would not have earned any points.

*Bold points= actual points awarded

**L2= entered in Level 2 not Level 3